



# EU Colour Code Locator Guide

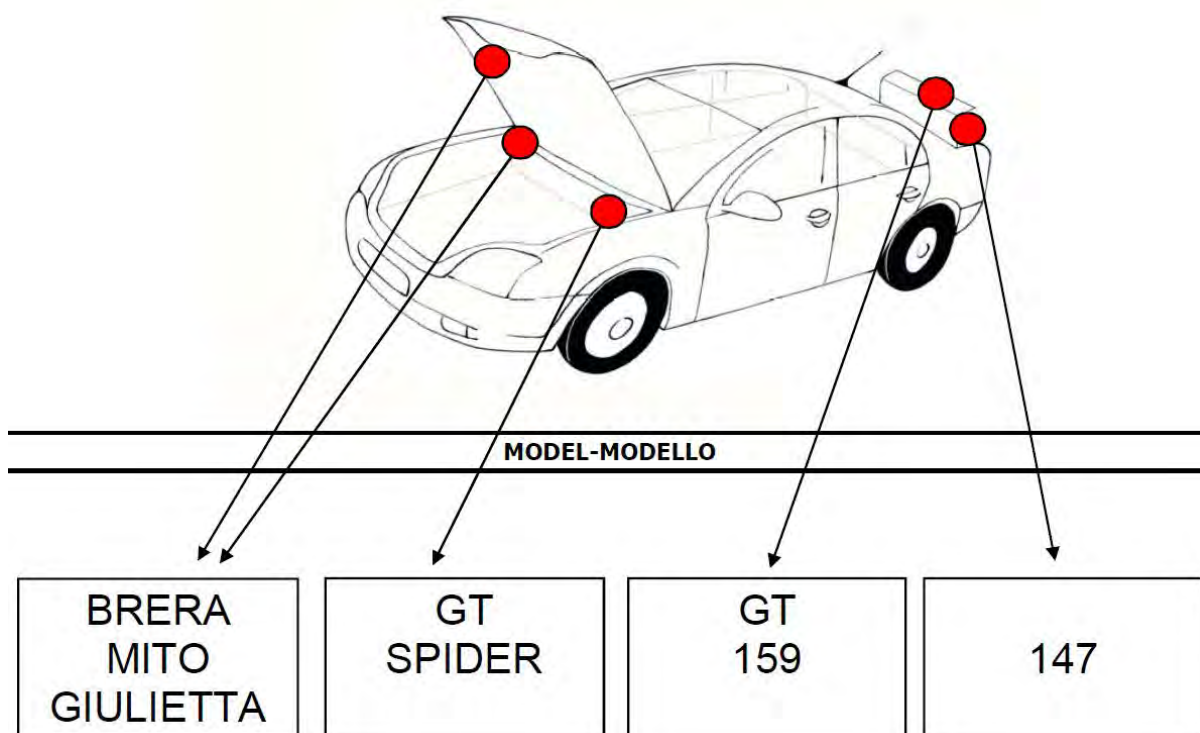


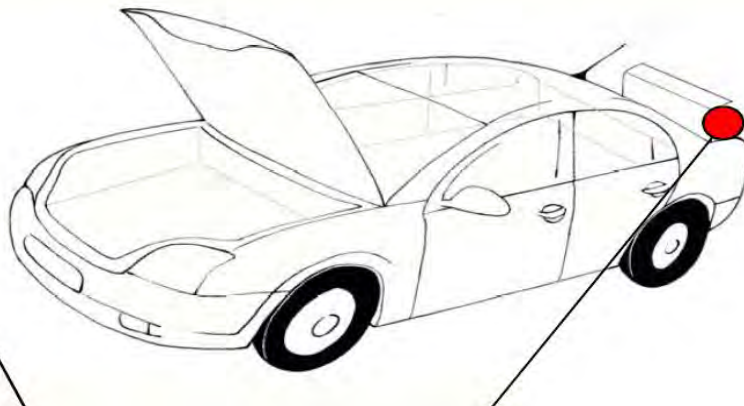
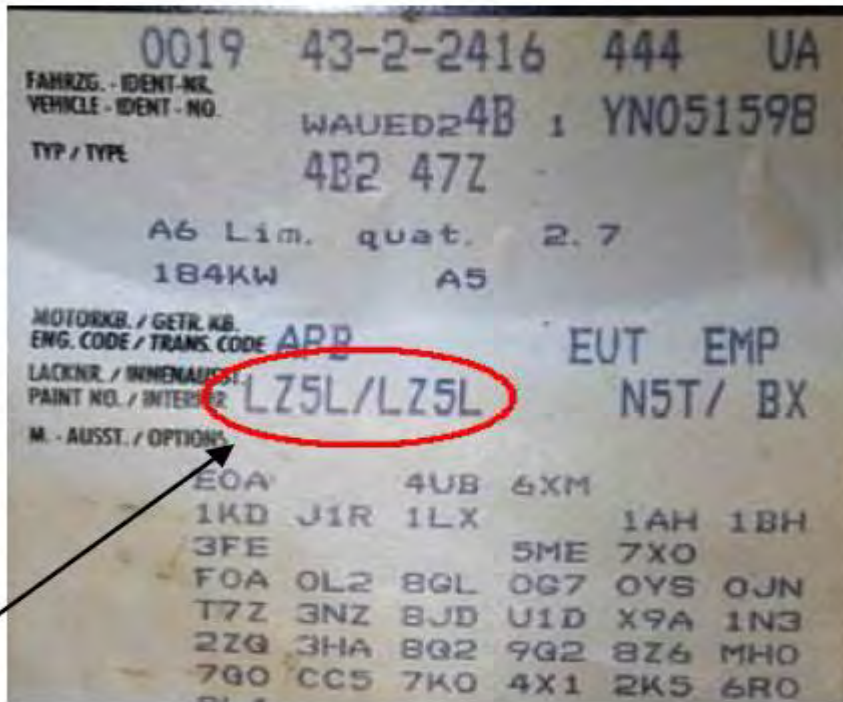
# CONTENTS

- Alfa Romeo
- Audi
- Daihatsu
- Fiat
- Ford EU
- Honda
- Hyundai
- Isuzu
- Jaguar
- Kia
- Lancia
- Land Rover
- Lexus
- Maserati
- Mazda
- Mercedes Benz
- Mini
- Mitsubishi
- Nissan
- Opel /GM Europe
- Peugeot
- Porsche
- Renault
- Saab
- Seat
- Skoda
- Smart
- SSangyong
- Subaru
- Suzuki
- Toyota
- Volkswagen
- Volvo

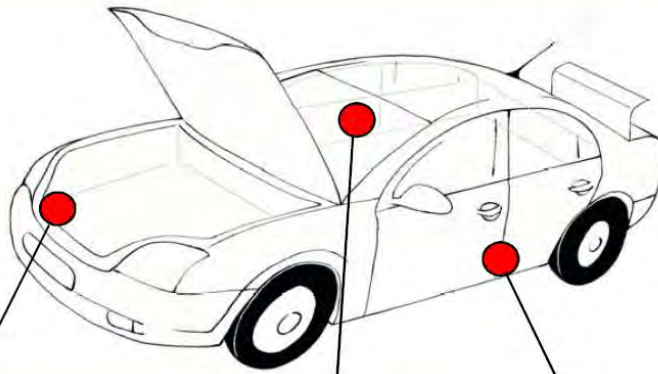


<b>VERNICIATURA ORIGINALE</b>		<b>ORIGINAL PAINTING</b>	
<b>PEINTURE ORIGINALE</b>		<b>ORIGINALLACKIERUNG</b>	
<b>COLORE • TEINTE</b> <b>COLOUR • FARBTON</b>			
<b>CODICE • CODE</b>			
<b>PER L'AUTORITOCOCCO</b> <b>USARE PRODOTTI</b>			





ALL MODELS



MODEL-MODELLO

X3-X5-X4

6 SERIES

ALL CABRIOS

X5

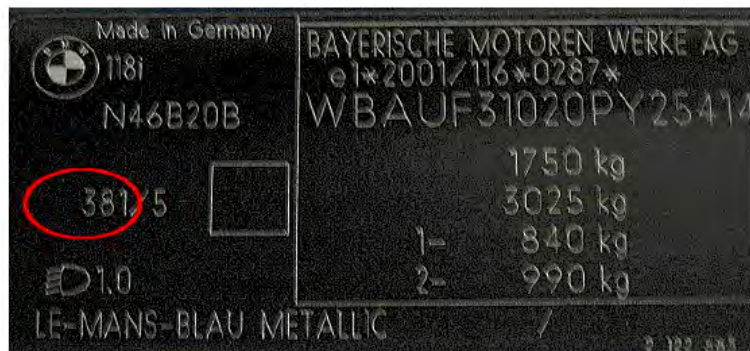
X6

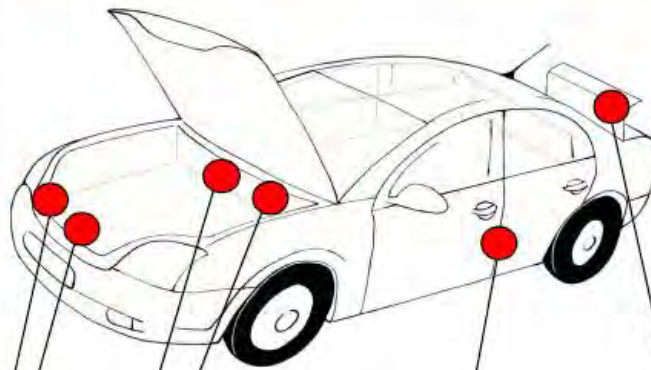
6 SERIES

1 SERIES 3 SERIES

5 SERIES 7 SERIES

X1-X3-Z4





MODEL-MODELLO

CORVETTE  
HRR

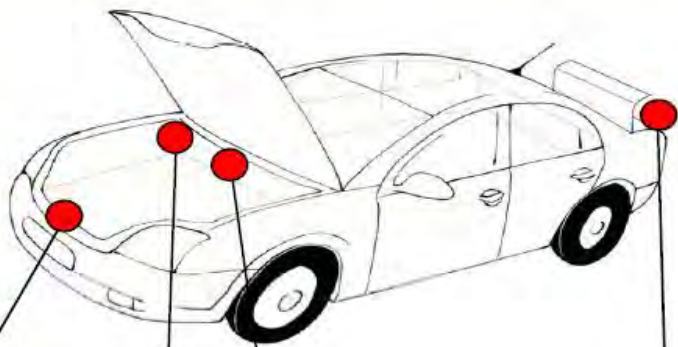
AVEO  
CAPTIVA  
CORVETTE  
EPICA  
KALOS  
TACUMA

LACETTI  
MALIBU  
MATIZ  
NUBIRA

CAMARO

CORVETTE  
MALIBU

(MODEL) KLA4  
(TYPE APPROVAL NO)  
(VEHICLE IDENTIFICATION NO)  
KLA4M11BCXC392413  
(ENGINE TYPE) F8CV  
(BODY COLOR) 75U

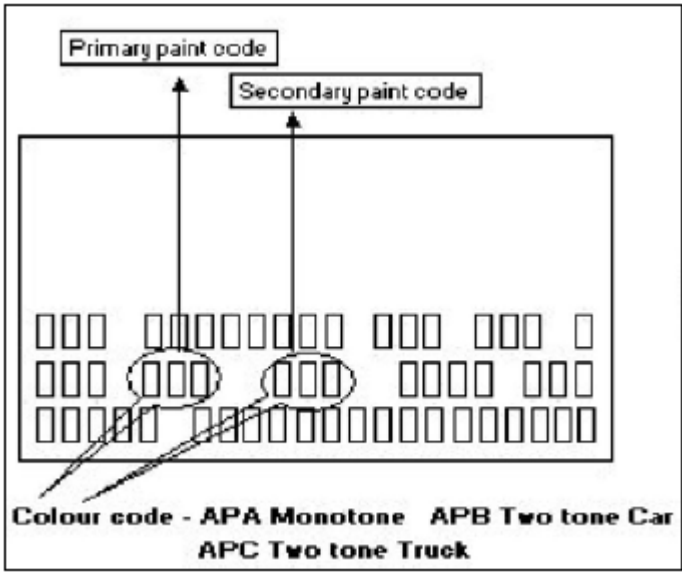


MODEL-MODELLO

CROSSFIRE  
VOYAGER  
WRANGLER  
300C  
CHEROKEE

AVENGER  
PT CRUISER  
SEBRING  
CHEROKEE

GRAND  
CHEROKEE





PRESSIONS CONTROLEES PNEUS FROIDS

2.5 2.2

2.5 2.2

185/55R 14 79H

MICHELIN PILOT SX GT

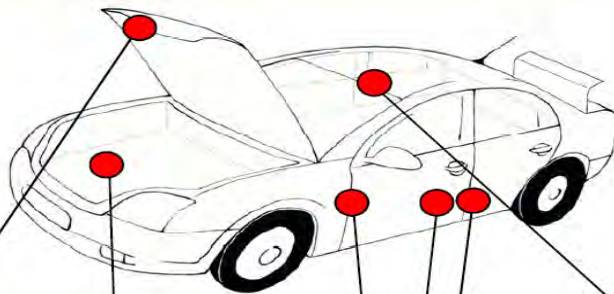
PRESSION ROUE SECOURS 2.7 Bar

08117CJ

12345

**EWPA**

12345



MODEL-MODELLO

C-CROSSER  
NEMO

JUMPER

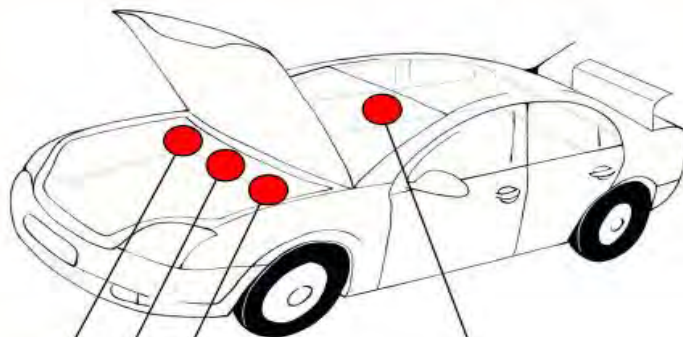
C2 C3 C4  
C5 C6 C8  
XARA  
PICASSO  
BERLINGO  
JUMPY  
DS3 - DS4

C1





<b>DAIHATSU MOTOR CO. LTD</b>	
<b>JBA00F30000091452</b>	
<b>TYPE F300LG</b>	<b>BMKE</b>
<b>ENGINE HD</b>	<b>COLOR B62</b>



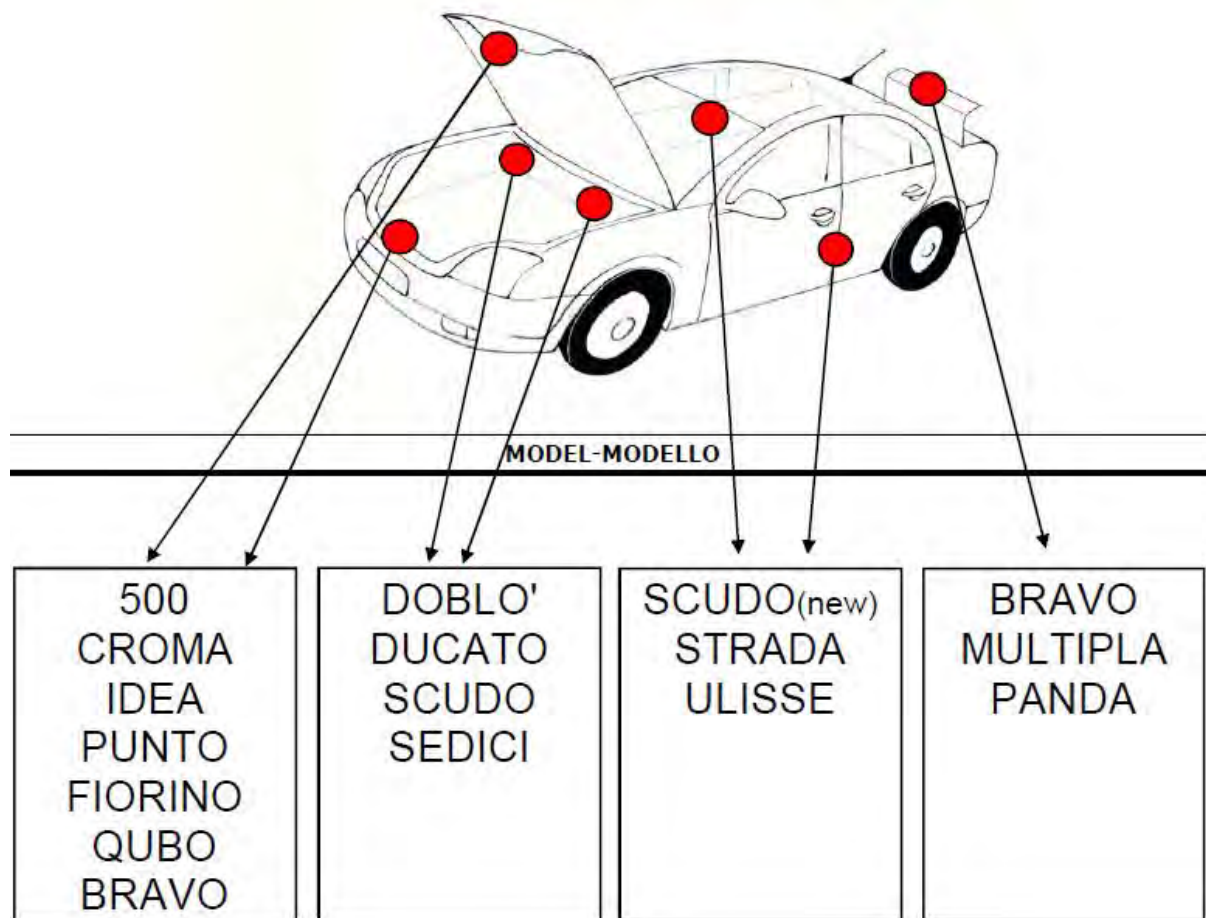
MODEL-MODELLO

CHARADE  
COPEN  
CUORE  
MATERIA  
SIRION  
TERIOS

CUORE (2010)



VERNICIATURA ORIGINALE PEINTURE ORIGINALE		ORIGINAL PAINTING ORIGINALLACKIERUNG
COLORE • TEINTE COLOUR • FARBTON		
CODICE • CODE		
PER L'AUTORITOCOCO USARE PRODOTTI		



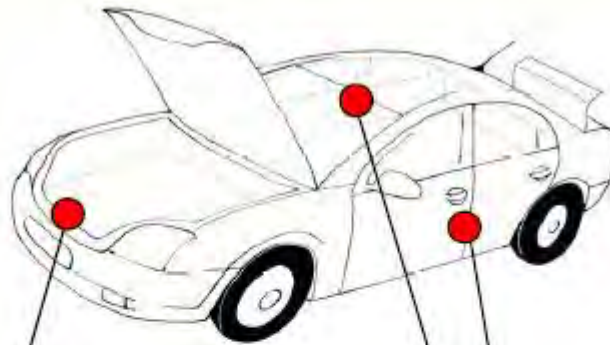


**FORD EUROPE AUTO**

FORD	
REGISTRATION APPROVAL NUMBER	
VEHICLE IDENTIFICATION NUMBER	
1	XXXX
2	XXXX
3	XXXX XXXX XXXX XXXX XXXX
4	XXXX XXXX XXXX XXXX XXXX

**FORD EUROPE LIGHT TRUCK VEHICLES**

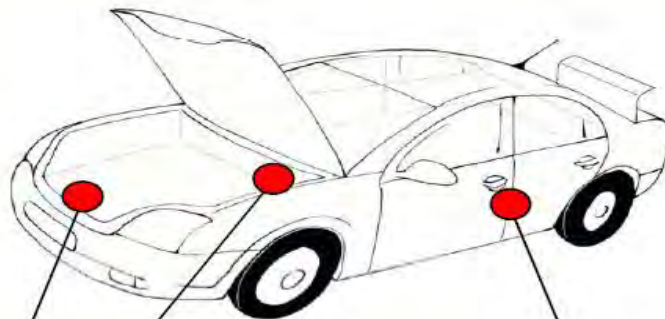
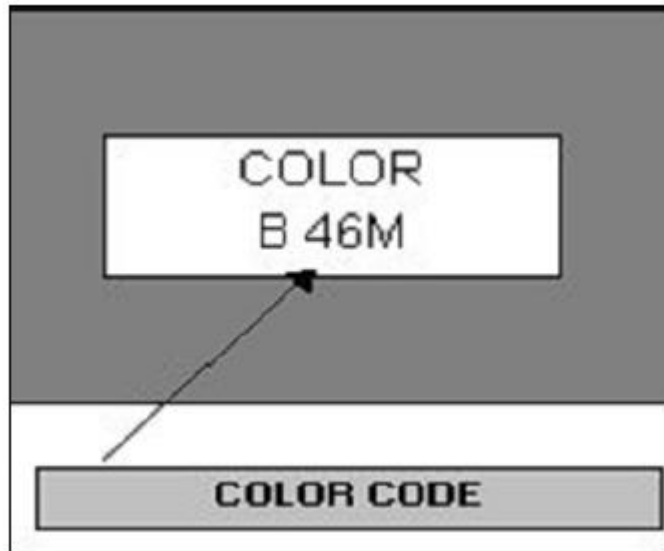
FORD	
REGISTRATION APPROVAL NUMBER	
VEHICLE IDENTIFICATION NUMBER	
1	XXXX
2	XXXX
3	XXXX XXXX XXXX XXXX XXXX
4	XXXX XXXX XXXX XXXX XXXX



MODEL-MODELLO

FIESTA  
FOCUS  
KA

FIESTA, FOCUS, FUSION,  
GALAXY, NEW KA,  
MONDEO,  
RANGER, C-MAX,  
S-MAX, TOURNEO  
TRANSIT



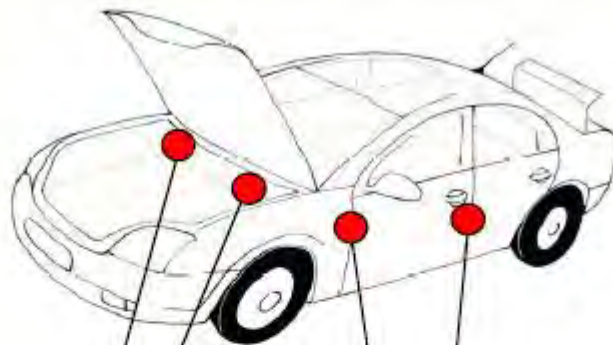
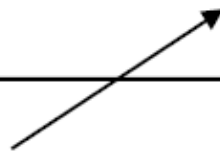
MODEL-MODELLO

ACCORD  
CIVIC  
CR-V  
FR-V  
JAZZ  
S2000

CIVIC (NEW)  
INSIGHT  
S2000



XXXXXXXXXX	XXXXXXXXXX	XXXXXXXXXX	XXXXXXXXXX
XXXXXXXXXX	XXXXXXXXXX	XXXXXXXXXX	XXXXXXXXXX
TRANS E	AXLE N	PAINT FS	TRIM AQ



MODEL-MODELLO

ACCENT  
COUPE'  
H1  
SONATA

GETZ, i10 i20 i30  
iX35, iX55  
MATRIX  
SANTA FE  
TUCSON



ISUZU MOTORS LTD. JAPAN  
V.I.N. 4S2CM57W1W4300001  
M.D. UES7ZC AB / JI  
ENGINE RLV TRANS. RMN  
GRADE RBA TIRE AQC  
BODY TYPE  
B. COLOR / TRIM 752/180  
OPTION  
C60 DH6 S7C 7LJ

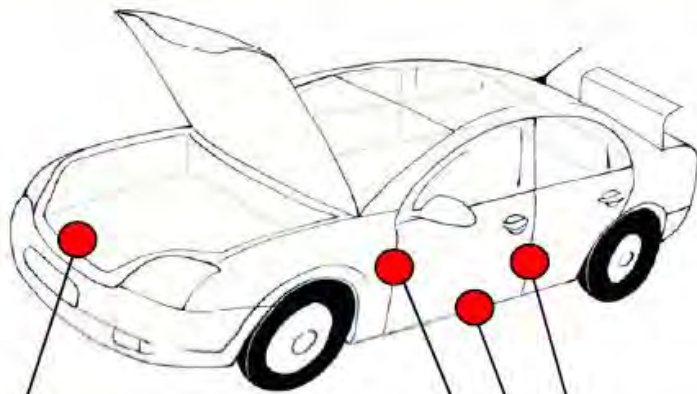


MODEL-MODELLO

ALL MODELS



<b>JAGUAR CARS LTD</b>				
e11*98/14*0176				
SAJAB53L41WC11674				
2140 Kg				
3560 Kg				
1	1105 Kg			
2	1090 Kg			
PAINT	PED	TRIM	LEG	GS



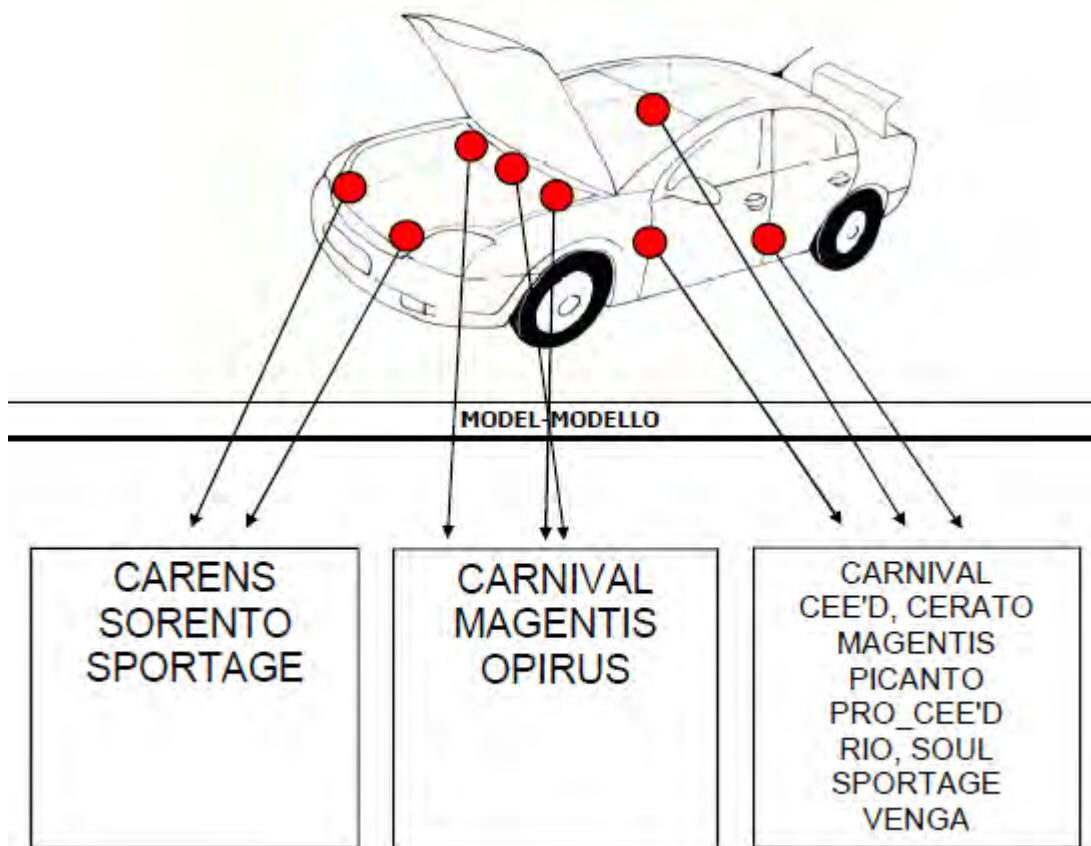
MODEL-MODELLO

XJ

XF  
XJ  
XK  
X-TYPE



기아 자동차 (주)		KIA MOTORS CORPORATION	
변속기 TRANSM	차축 AXLE	색상 PAINT	의장 TRIM
5		P9	NL
정비부호 S.V.C	형식 APPD	승인 MODEL	번호 NO.
형식승인년월일 MODEL APPD DATE		e4*2001/116*0085 -KNEBA24326T254913- 1350kg 2050kg 1-720kg 2-710kg	







VERNICIATURA ORIGINALE PEINTURE ORIGINALE		ORIGINAL PAINTING ORIGINALLACKIERUNG
COLORE • TEINTE COLOUR • FARBTON		
CODICE • CODE		
PER L'AUTORITOCO USARE PRODOTTI		



MODEL-MODELLO

MUSA

PHEDRA

YPSILON



XXXXXXXXXX	XXXXXXXXXX
XXXXXXXXXXXXXXXXXX	X XXX
XXXX XX	
XXXX XX	
XX XX	XXXXXXXX
Paint XXX	Trim XX

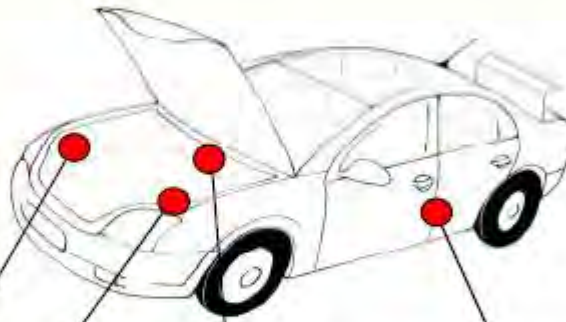


MODEL MODELLO

DISCOVERY  
RANGE ROVER  
SPORT

DEFENDER  
RANGE ROVER

FREELANDER




MODEL-MODELLO

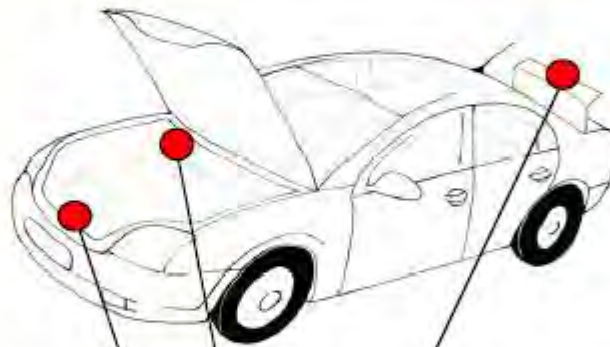
GS  
RX

IS  
LS

SC  
GS  
IS  
RX

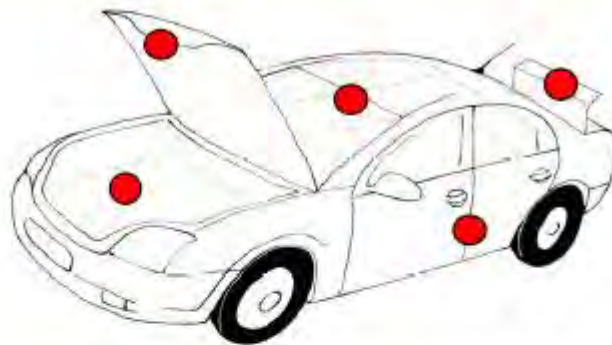


 MASERATI	<b>VERNICIATURA ORIGINALE ORIGINAL PAINTING</b>
	<div style="border: 1px solid black; width: 100px; height: 40px; margin: 0 auto;"></div> <p>COLOR <input type="text" value="BLISSERA MET"/></p> <p>CODE <input type="text" value="239809"/></p>



MODEL-MODELLO

GRANTURISMO  
QUATTROPORTE



---

MODEL-MODELLO

---

ALL MODELS





Made by BMW

 COOPER  
W10B16A

**901/6** 

 1.0  
SILK GREEN

Bayerische Motoren Werke AG  
e1\*98/14\*0168\*00  
WMWRC31060TB30

	1480	kg
	2130	kg
1-	870	kg
2-	700	kg



MODEL-MODELLO

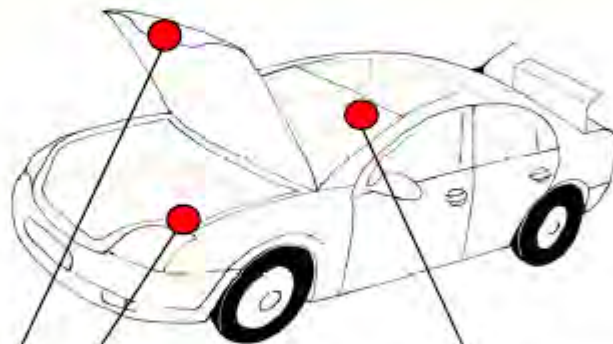
COOPER  
COOPER CABRIO  
COOPER S  
COOPER S CABRIO  
ONE

COOPER CLUBMAN  
COOPER S CLUBMAN



MITSUBISHI  
MODEL N. 18 WDNULT8  
ENGINE 4D69  
TRANS FSM31  
COLOR INT. **B42 + A81**

MITSUBISHI 002826  
0365-25449  
MODEL D32DAVBDH4QPQ  
ENGINE 4G68  
TRANS F5M31  
COLOR TRIM A28  
OPT V20  
EUROPE 4MBBND32ATE002825  
EXT **T83**



MODEL-MODELLO

GRANDIS  
LANCER  
L200  
OUTLANDER  
PAJERO

COLT  
COLT CZC





NISSAN EUROPE N  
SJNFDAP11U0098567

1700 kg

2530 kg

990 kg

825 kg

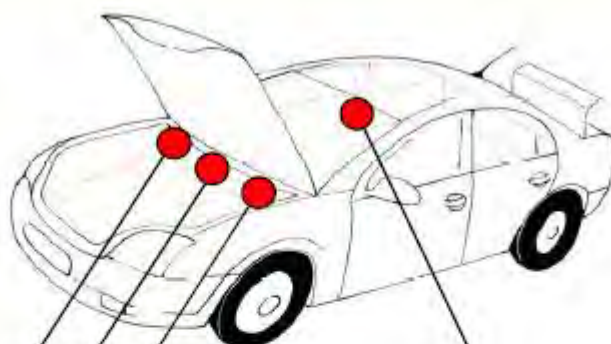
type EDAP 11

COLOR, TRIM

326

K

FUCALFFP115B741



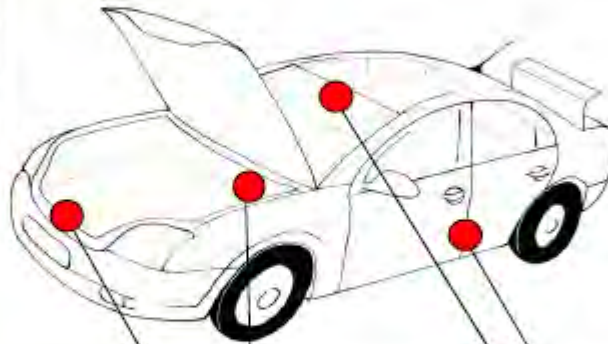
MODEL-MODELLO

350Z  
NAVARA  
MICRA  
PATHFINDER  
TIIDA  
X-TRAIL  
NP300 PICK UP

MICRA  
NOTE  
QASHQAI  
PIXO  
KUBISTAR  
PRIMASTAR



OPEL  
DGM 53534 EST 58  
WOL0000737T612963  
1390  
2390  
1-0730  
2-0650  
FARBE  
COLOR Z 474

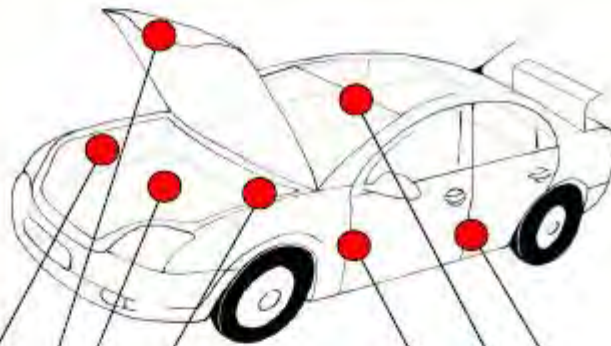


MODEL-MODELLO

GT

ANTARA  
ASTRA  
CORSA  
MERIVA  
TIGRA

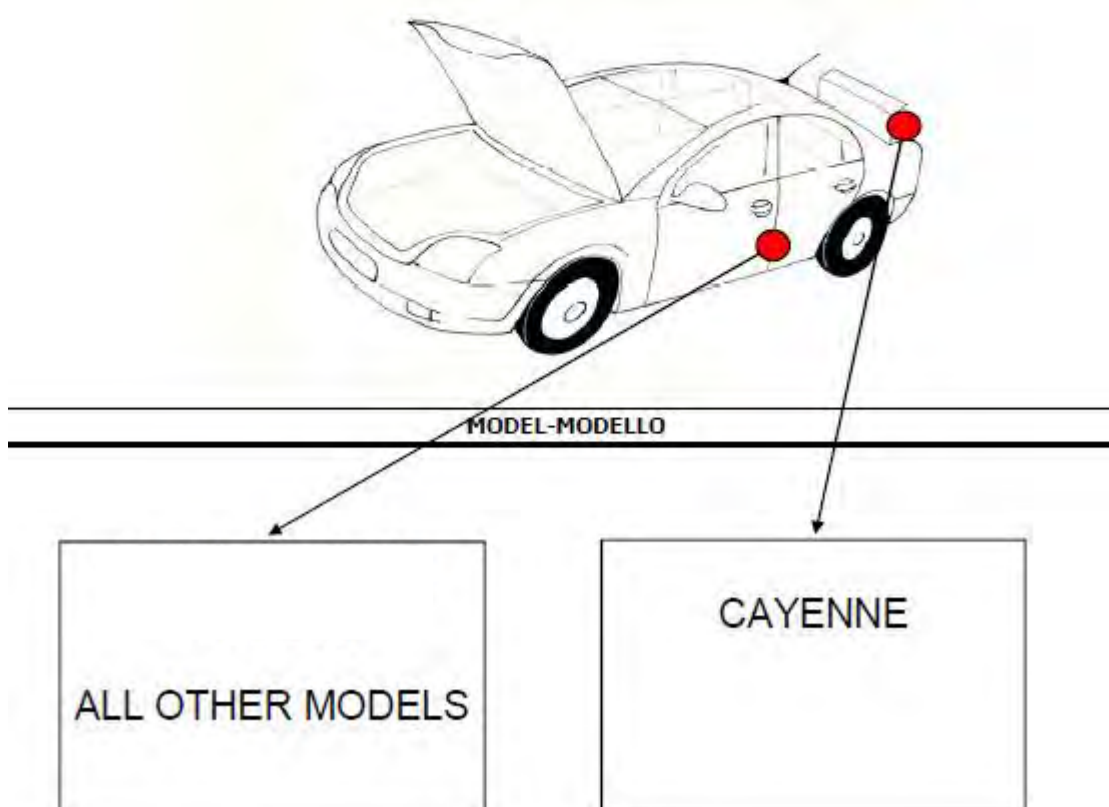
AGILA  
ASTRA  
CORSA  
INSIGNA  
ZAFIRA  
COMBO  
MOVANO  
VIVARO

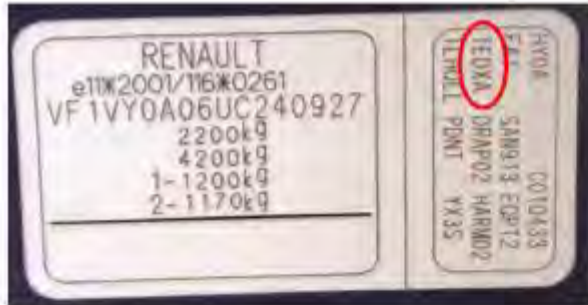


MODEL-MODELLO

4007  
607  
BIPPER  
BOXER  
JUMPER

107, 1007, 206,  
206+, 207, 307,  
308, 3008, 407,  
508, 5008, 807,  
RCZ, EXPERT  
PARTNER

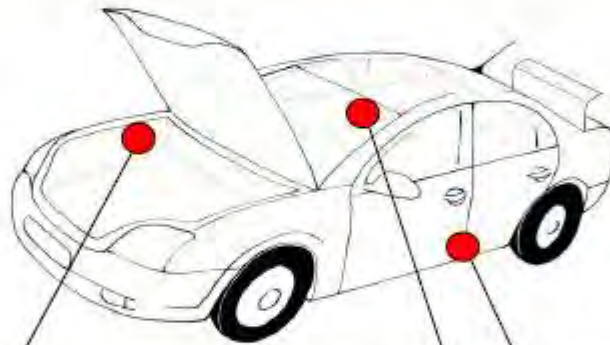




QUALITY		
O	1 COAT SOLID	OPAQUE
OV	B/C SOLID	OPAQUE VERNIS
MV	B/C METALLIC	METALLISE VERNIS
NV	B/C PEARL	NACRE VERNIS
TE	SPECIAL EFFECT	TEINTE EFFECTE
CM	FLEET	CONTREMARQUE

EXAMPLES

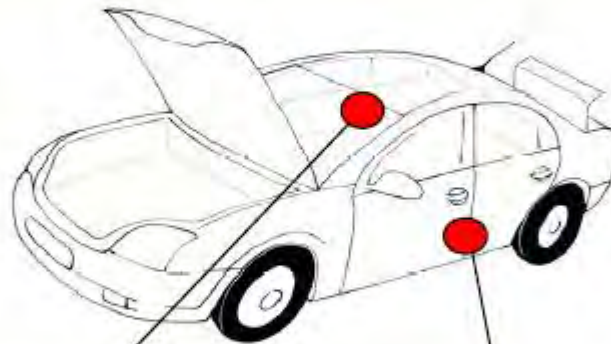
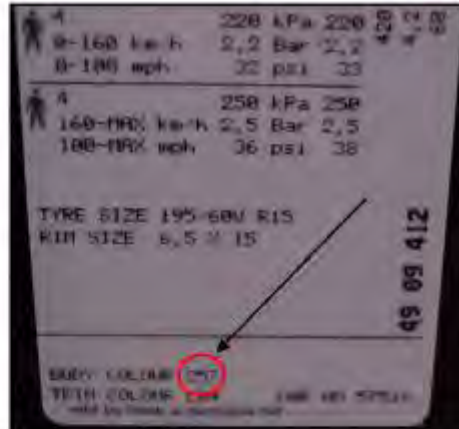
O389	D = 1 COAT SOLID	389 = PAINTCODE	BLANC GLACIER
OV389	OV = B/C SOLID	389 = PAINTCODE	BLANC GLACIER
MV931	MV = B/C MET	931 = PAINTCODE	TILLEUL EFFECT
NV676	NV = B/C PEARL	676 = PAINTCODE	NOIR EFFECT
TEJ47	TE = SPECIAL EFFECT	J47 = PAINTCODE	BLEU GRIS EFFET
CM16	CM = FLEET	A16 = PAINTCODE	MARRON UPS



MODEL-MODELLO

ESPACE  
KANGOO

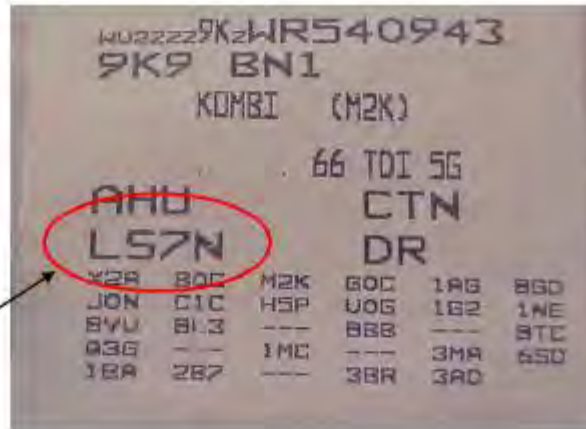
CLIO, ESPACE,  
FLUENCE, KANGOO,  
KOLEOS, LAGUNA,  
LATITUDE,  
MEGANESCENIC,  
MODUS, TWINGO,  
WIND, TRAFIC



MODEL-MODELLO

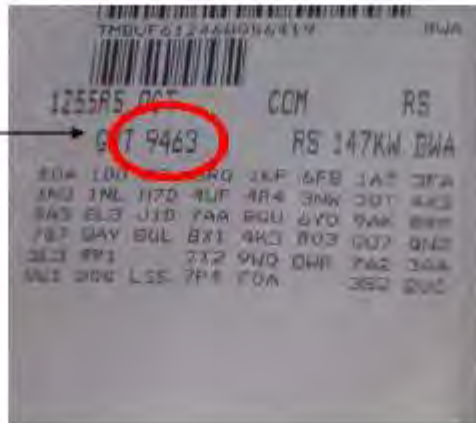
9-5

9-3  
9-5



MODEL-MODELLO

ALL MODELS



MODEL-MODELLO

FABIA  
OCTAVIA  
SUPERB





Made in France

EB1 EA4

PZ 4

MICRO COMPACT CAR SMART

WME01MC1YH106997

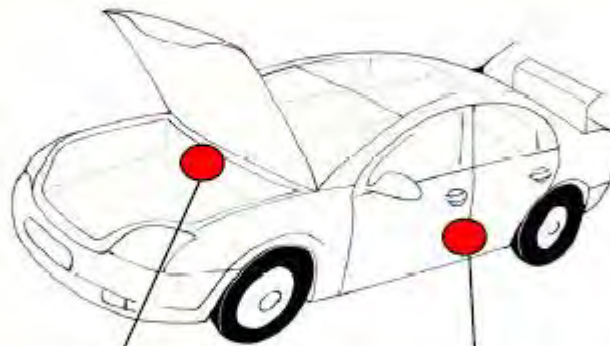
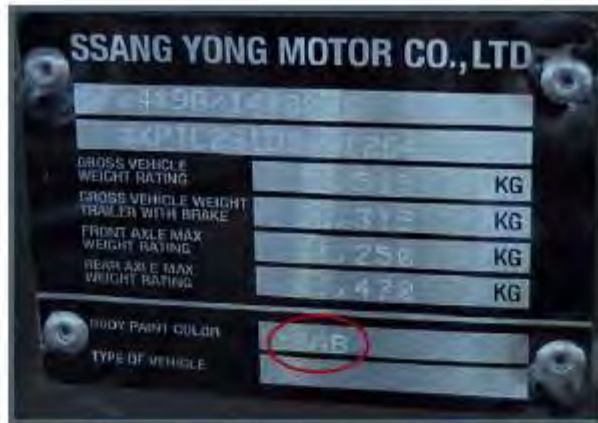
- 900 KG  
1 - 427 KG  
2 - 610 KG



MODEL-MODELLO

FORTWO  
New Models

FORTWO  
Old Models



MODEL-MODELLO

KORANDO  
REXTON

ACTYON  
KYRON  
RODIUS

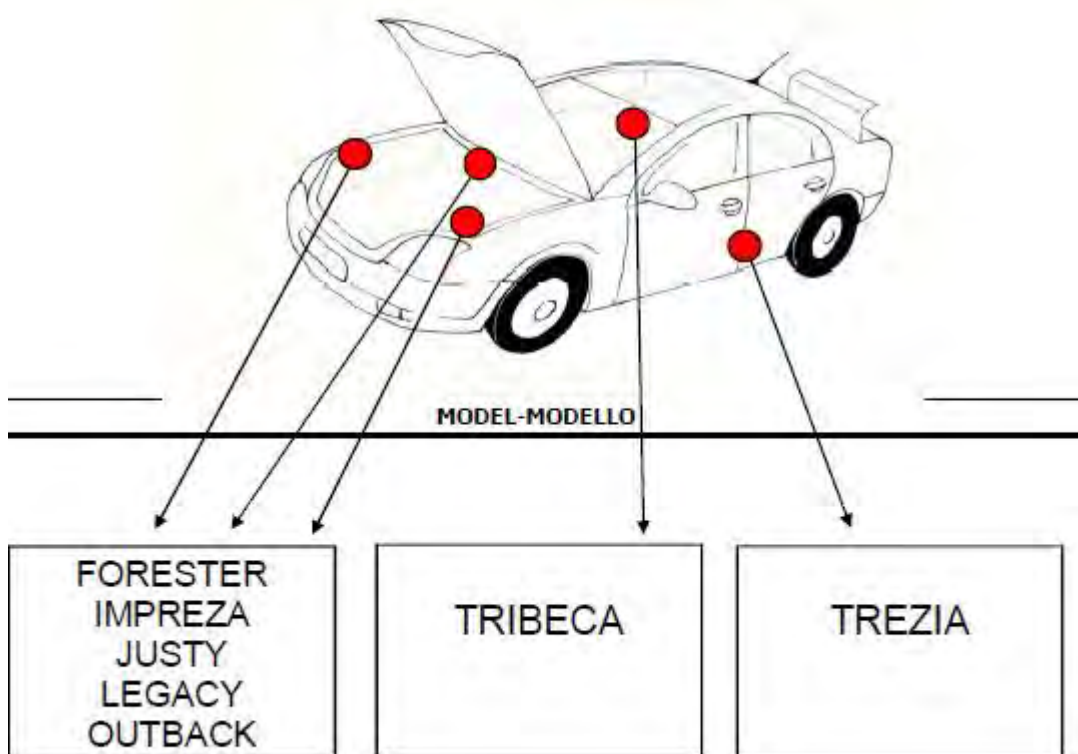


XXXXXXXXXXXXXXXXXXXX

XXXXXXXXXX XX

XXXXXX XXXX XX XXXXXXXXXXXX

Color Code XXX XXXXXXXXXXXX





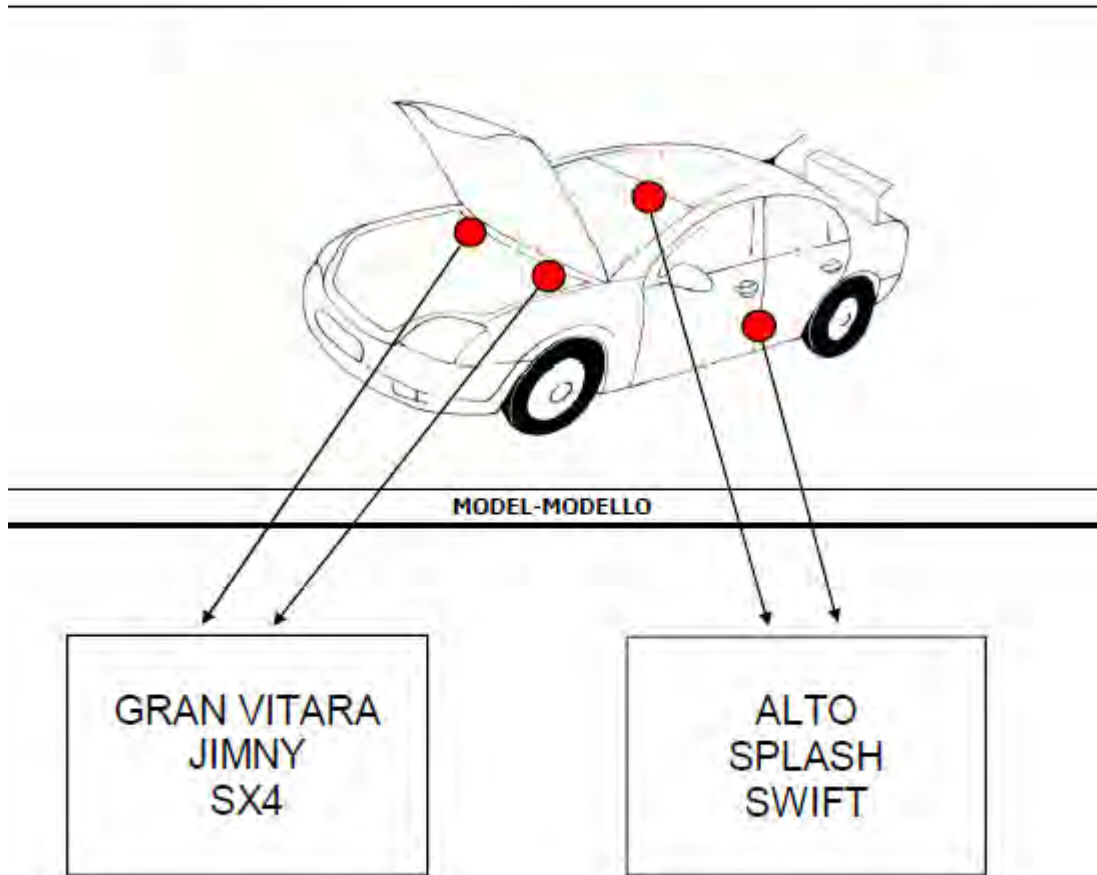
SUZUKI MOTOR CORPORATION

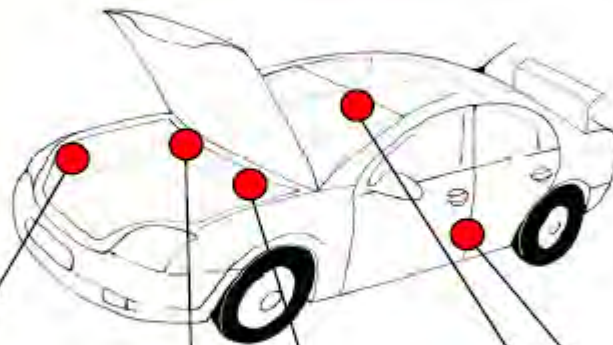
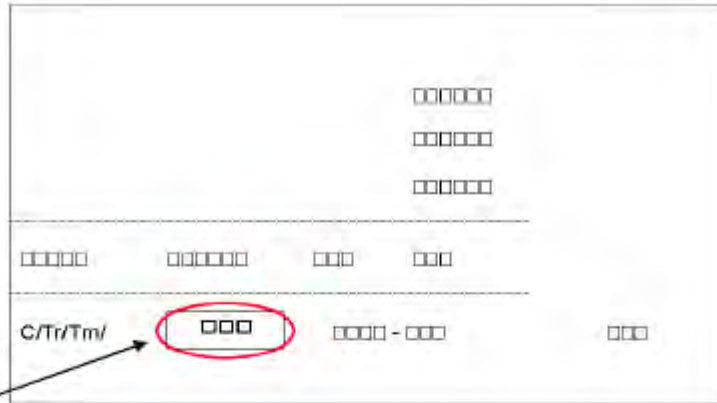
□□□□□□□□  
□□□□□□□□□□  
□□□□  
□□□□  
□□  
□□

---

TYPE                      COLOR  ←

ENGINE                  □□□□□□□□





MODEL-MODELLO

AVENSIS  
PRIUS  
YARIS

COROLLA  
LAND CRUISER  
RAV 4  
HIACE  
HILUX

AURIS  
AVENSIS  
AYGO  
COROLLA  
iQ, PRIUS  
YARIS, DYNA  
URBAN CRUISER  
VERSO

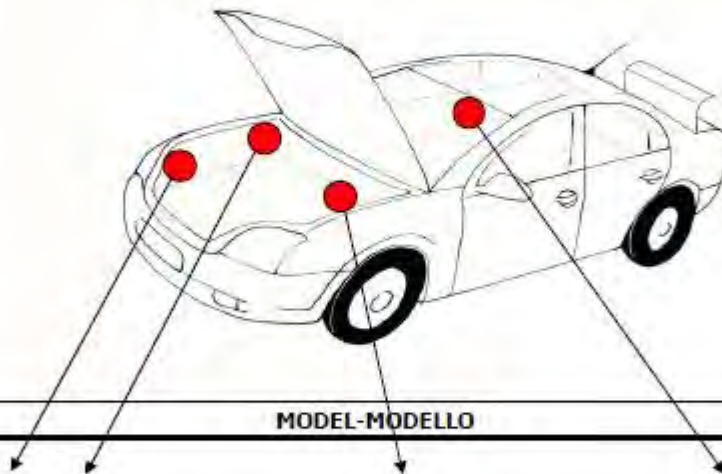
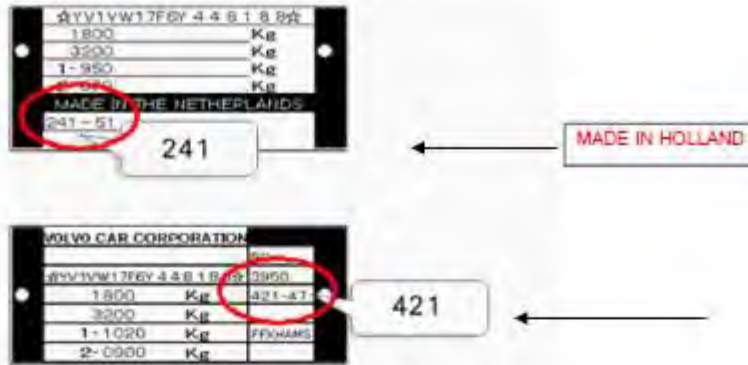


1H1PF48E	GT	TDI		TD15G	
CYK	<b>LB7Z</b>			UB	8KW AFN
4CP		G0C	HOU	JON	M6N
	405	L6G	2PY	G5T	1N1 49T
			5J1	1KK	MM7 WW9
ORE	LY	K4	3YH		1BA
<b>COLOR CODE</b>					



MODEL-MODELLO

ALL MODELS



MODEL-MODELLO

S40  
S60  
V70

C70  
S80  
V40  
V70  
XC90

C30, C70  
S40, V50  
V70, XC70